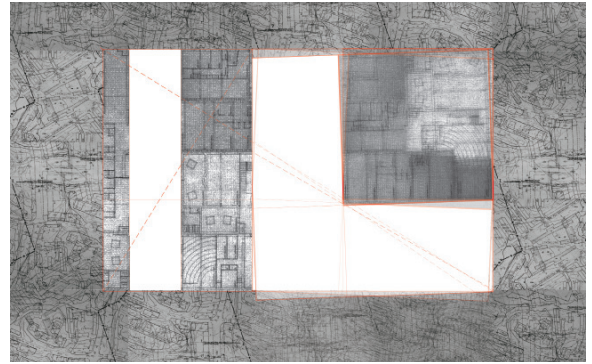


[Placemaking]

Assignment: Capturing Place

In architectural terms, then, Nordic space is topology, Nordic form collage, and Nordic gestalt a hybrid that unites contradictions.

- Christian Norberg-Schulz



Collage catalogue.

Your assignment for the final project of the semester is to capture the experience of a place through a set of six collages. You will begin by identifying a building that you have been able to experience personally, which has had a profound impact on you in understanding a sense of place. As we've been discussing in class, a space can only be fully comprehended through a bodily, physical interaction, allowing the engagement of all senses. Consider this place as it addresses Pallasmaa's six themes.

April 14: PLACE BACKGROUND INFO + JOURNAL

I will meet with each of you individually to discuss the place you've chosen and how you might approach its documentation and analysis. In preparation for this meeting, you should have background information to introduce the project and write an outline framing this project as it embodies Pallasmaa's themes. You should also turn in your journals, complete with notes/questions on all of this semester's readings.

April 21: PIN-UP

You will verbally and graphically present background information [photographs and drawings] on the place you've selected to analyze. This background information should be formatted on 11x17 paper in landscape format. After you have introduced the class to the place you have experienced and researched, you will present rough drafts of each of the six collages. These collages should be of a consistent size [between 6x9 and 11x17] and collage technique [materials may vary]. This is an interim discussion to introduce the class to new places, as well as to address collage methods and the cohesiveness of the collages as a set. As we will not be inviting any outside reviewers, it is your responsibility to give feedback to your classmates.

April 28: NO CLASS - TOPICAL FINAL REVIEWS

May 5: SUBMISSION [pin-up TBD]

Your comprehensive catalogue, six collages analyzing a single work of architecture as evidence of Pallasmaa's six themes, is due. In conjunction with the collages, you will write a minimum of 200 words about *each* theme as it relates to your chosen place. Submit all six collages, six project statements, and background content by 5pm on Thursday, May 5. This work must be submitted physically and digitally [collages scanned at 300 dpi].

